

# Arizona 3

Featured Elevation Style:  
Prairie



## About Arizona 3 Bedroom

Find your dream home with the Arizona 3. The great room, dining room and kitchen are placed at the rear of the house overlooking the backyard. The kitchen is accessible by a walkthrough pantry from the mudroom. There is a small hallway that contains a private home office and bathroom, accessible from either side of the house. The second floor contains the option of an open to below ceiling feature with bonus room or the possibility of a fourth bedroom. The floor plan includes three large-sized bedrooms, a main bathroom, and a sizable laundry room. The master bedroom has a walk-in closet and a huge 5-piece ensuite with a free-standing tub.

2361 sq. ft.

3 Bed

2.5 Bath

Alternate Elevation  
Craftsman Style



### Contact Us

1 (780)-554-9937

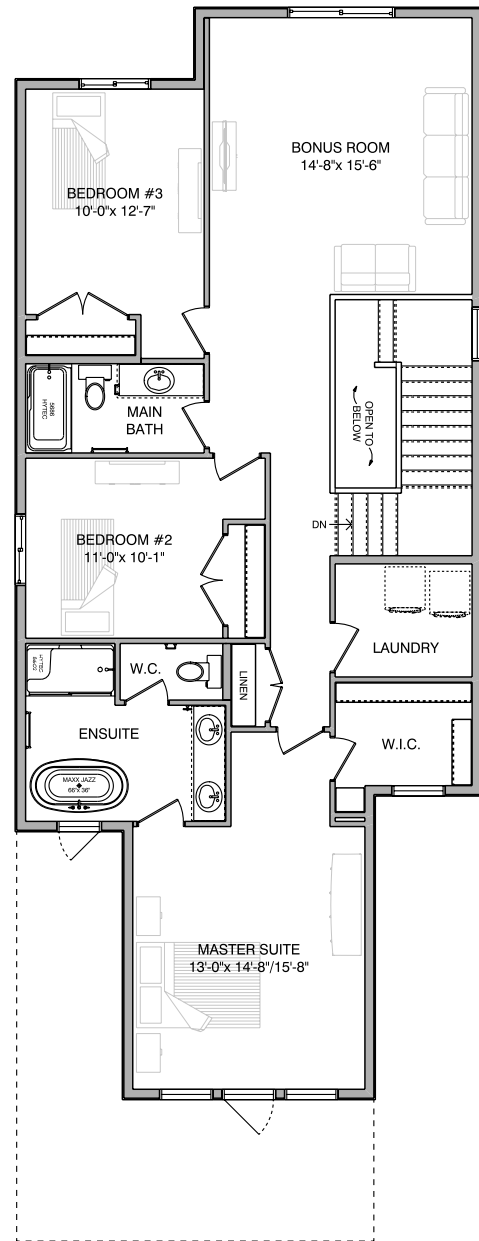
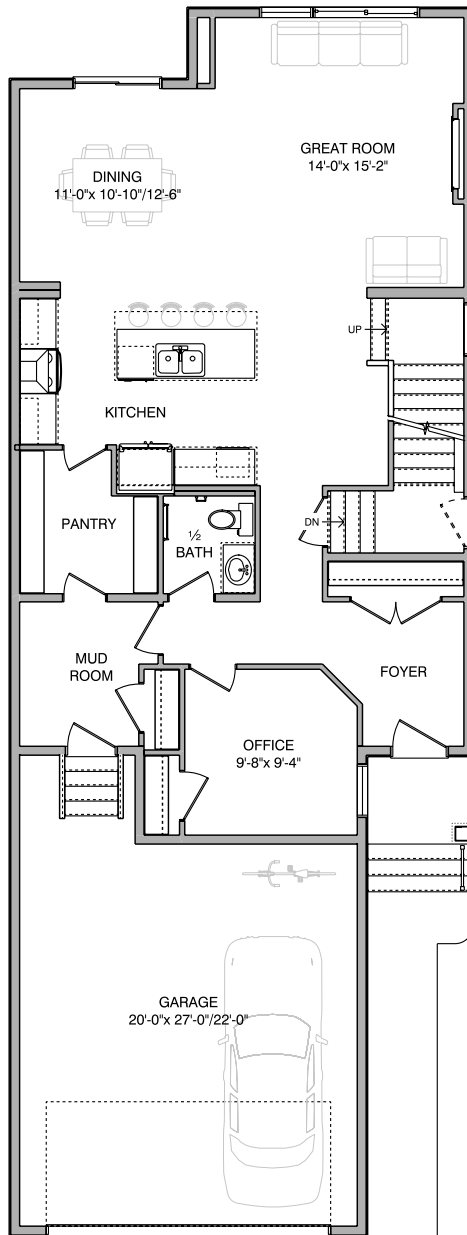
[sales@troiwestbuilders.com](mailto:sales@troiwestbuilders.com)



# Arizona 3

Main Floor  
1117 sq. ft.

Second Floor  
1244 sq. ft.



## Notes

---

---

---

Contact Us  
1 (780)-554-9937  
sales@troiwestbuilders.com

