

Arizona 4

Featured Elevation Style:
Craftsman



About Arizona 4 Bedroom

The Arizona 4 is a perfect home for your growing family. Features on the main floor include an open to below ceiling, a mudroom accessible from the garage, a full walk-through pantry into a spacious kitchen, a home office, and the option of either a half or full bathroom. The second floor contains a massive bonus room, a full laundry room, and the main second floor-bathroom. There are three additional bedrooms, two of which have windows overlooking the front of the house. The master bedroom, situated at the rear of the home, contains a full walk-in closet and a five-piece bathroom with a separate toilet section room and freestanding tub.

2381 sq. ft.

4 Bed

2.5 Bath

Alternate Elevation
Prairie Style



Contact Us

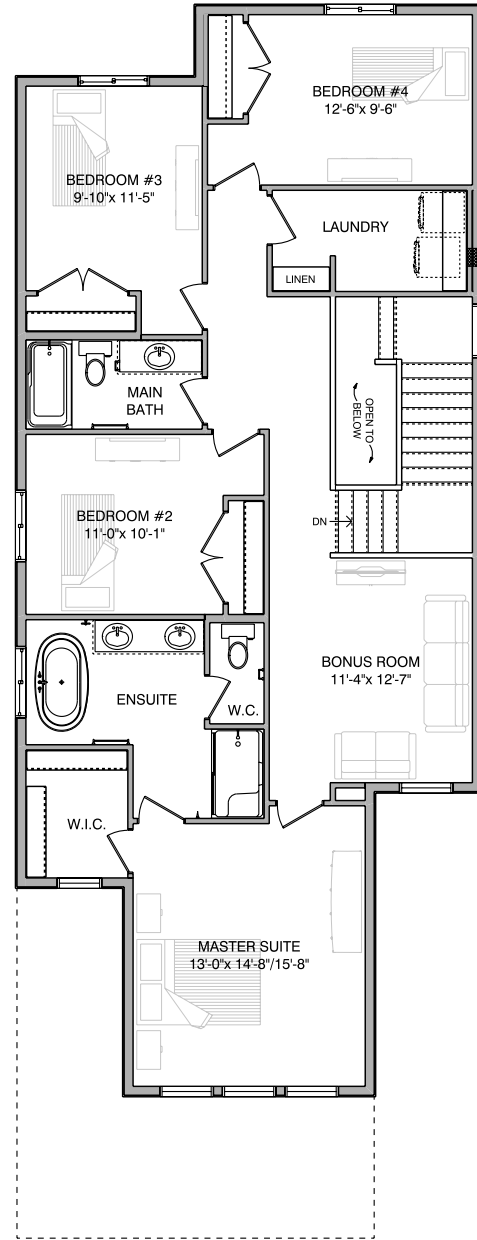
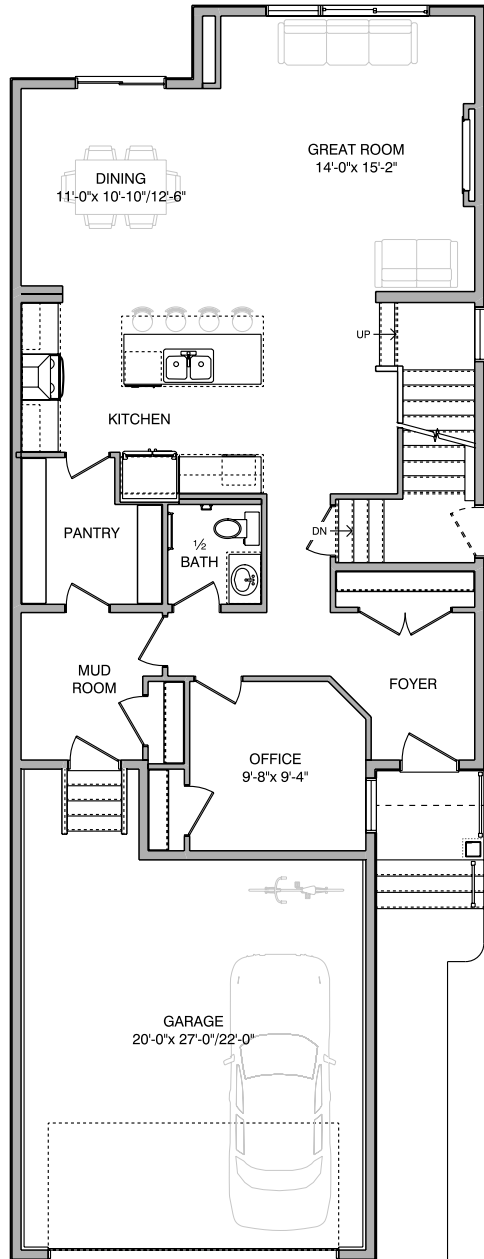
1 (780)-554-9937
sales@troiwestbuilders.com



Arizona 4

Main Floor
1117 sq. ft.

Second Floor
1264 sq. ft.



Notes

Contact Us
1 (780)-554-9937
sales@troiwestbuilders.com

