

# Cedar

Featured Elevation Style:

Prairie



## About Cedar

The Cedar is a fantastic layout for your next dream home. The attached garage enters into a mudroom and main floor half-bathroom. The open-concept main floor features a luxury kitchen, dining room, and great room. Upstairs you'll find an oversized bonus room perfect for spending time with the family, two bedrooms, a laundry closet, plus a master suite with a five-piece ensuite and his and hers walk-in closets. The home has ample storage space to keep you organized.

1932 sq. ft.

3 Bed

2.5 Bath

Alternate Elevation  
Craftsman Style



### Contact Us

1 (780)-554-9937

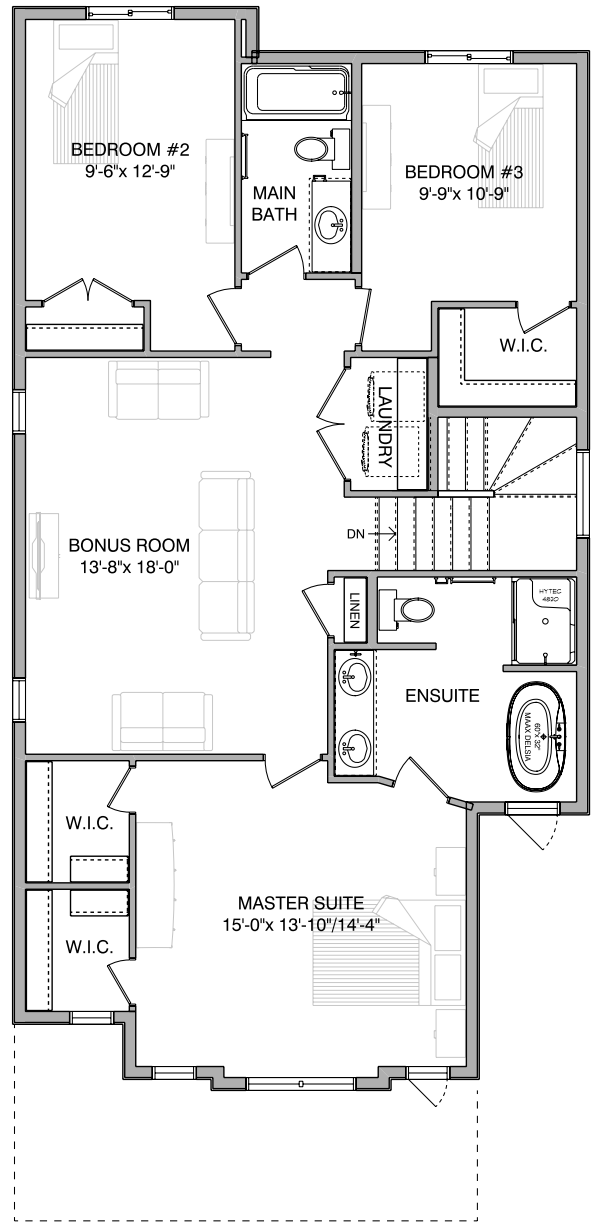
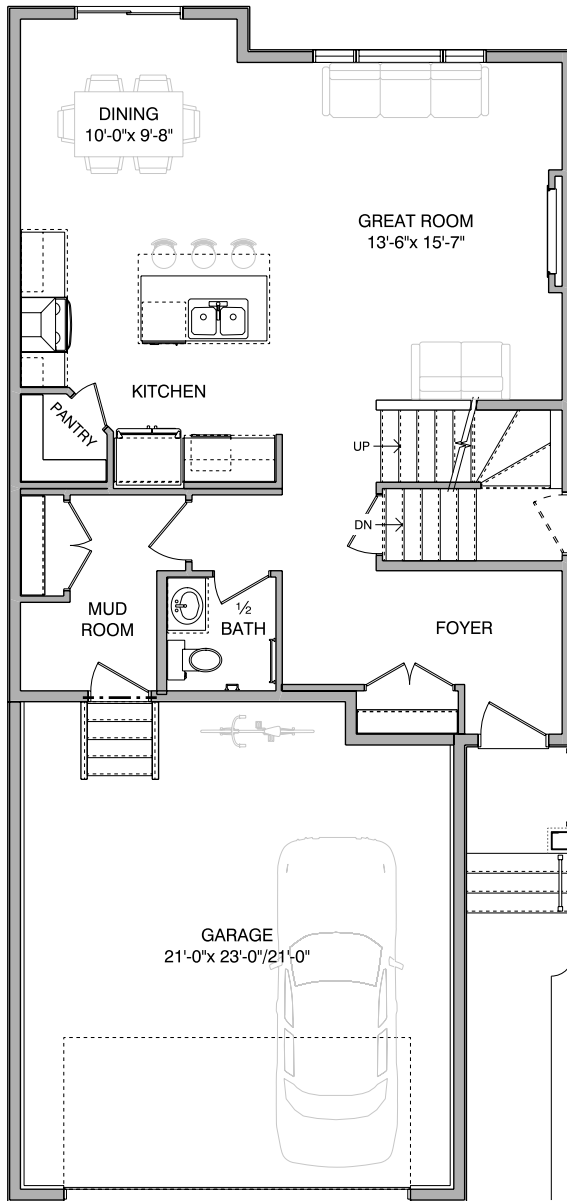
[sales@troiwestbuilders.com](mailto:sales@troiwestbuilders.com)



# Cedar

Main Floor  
823 sq. ft.

Second Floor  
1109 sq. ft.



## Notes

---

---

---

Contact Us  
1 (780)-554-9937  
sales@troiwestbuilders.com

