

# Hazel

Featured Elevation Style:  
Craftsman



## About Hazel

This gorgeous duplex is perfect for anyone looking to buy their first home or downsize to a smaller model. The home is efficiently designed to ensure you get as much usable space as possible! The kitchen, dining room, and living room are open concept, allowing you to host or spend quiet time at home comfortably. Upstairs there are three bedrooms, including the master suite, and a laundry room! The master suite has a full, three-piece ensuite and a walk-in closet.

1490 sq. ft.  
3 Bed  
2.5 Bath

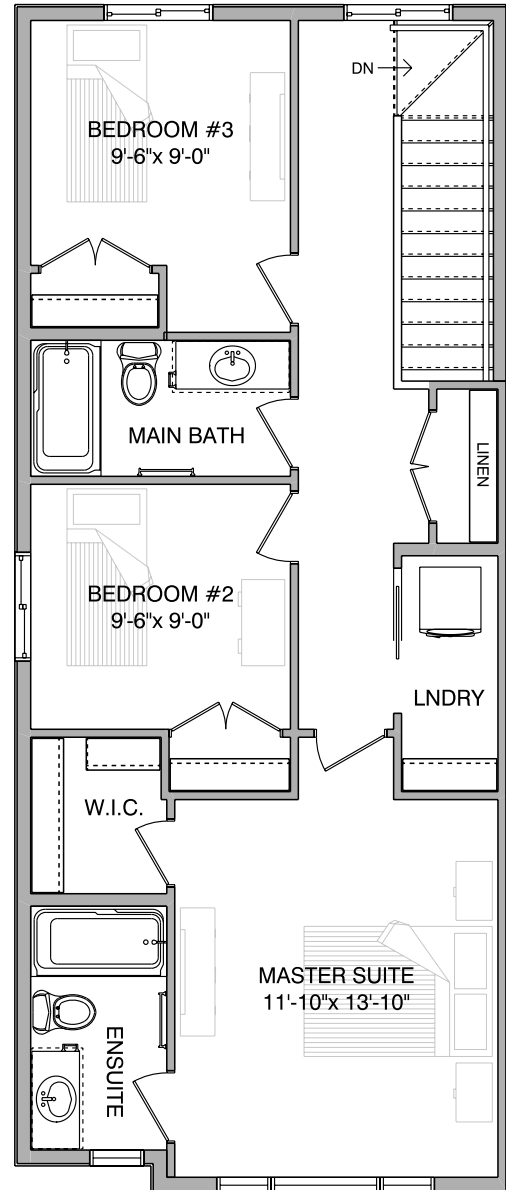
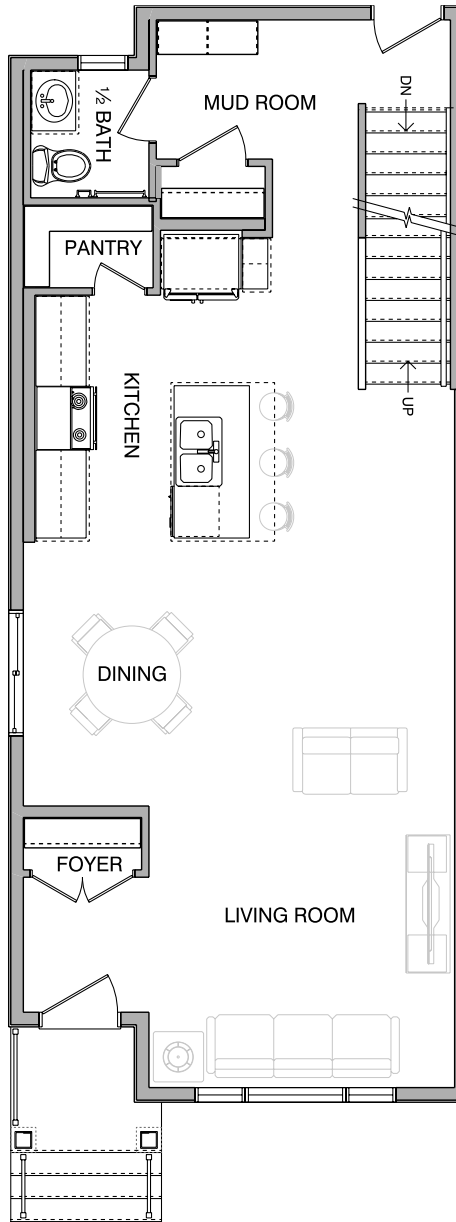
Contact Us  
1 (780)-554-9937  
sales@troiwestbuilders.com



# Hazel

Main Floor  
758 sq. ft.

Second Floor  
732 sq. ft.



## Notes

---

---

---

Contact Us  
1 (780)-554-9937  
sales@troiwestbuilders.com