

# Kaveri 4

Featured Elevation Style:  
Craftsman



## About Kaveri 4 Bedroom

The Kaveri 4 is perfect for families looking to upgrade to slightly more space. The main floor has a mudroom accessible from the garage, and the full walk-through pantry enters into a spacious kitchen. Also on the main floor you'll find a home office, open-concept dining and great rooms, and the option of either a half or full bathroom. The second floor contains a massive bonus room, a full laundry room, two bedrooms overlooking the front of the home, and a third bedroom to the side, and the main second floor-bathroom. The master bedroom, situated at the rear of the home, contains a full walk-in closet and a five-piece bathroom with a water closet and freestanding tub.

2243 sq. ft.

4 Bed

2.5 Bath

Alternate Elevation  
Prairie Style



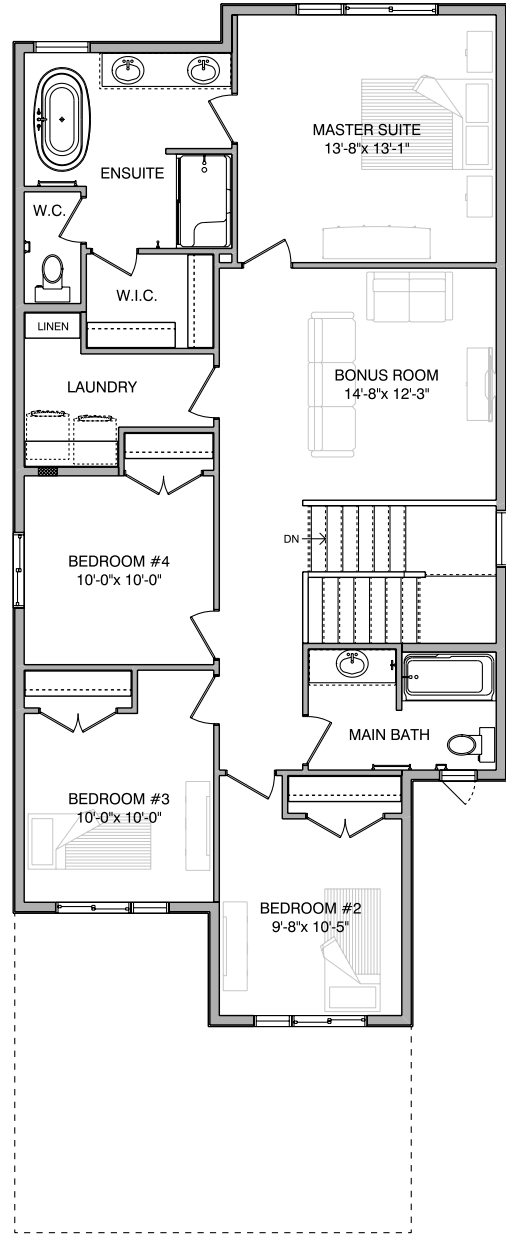
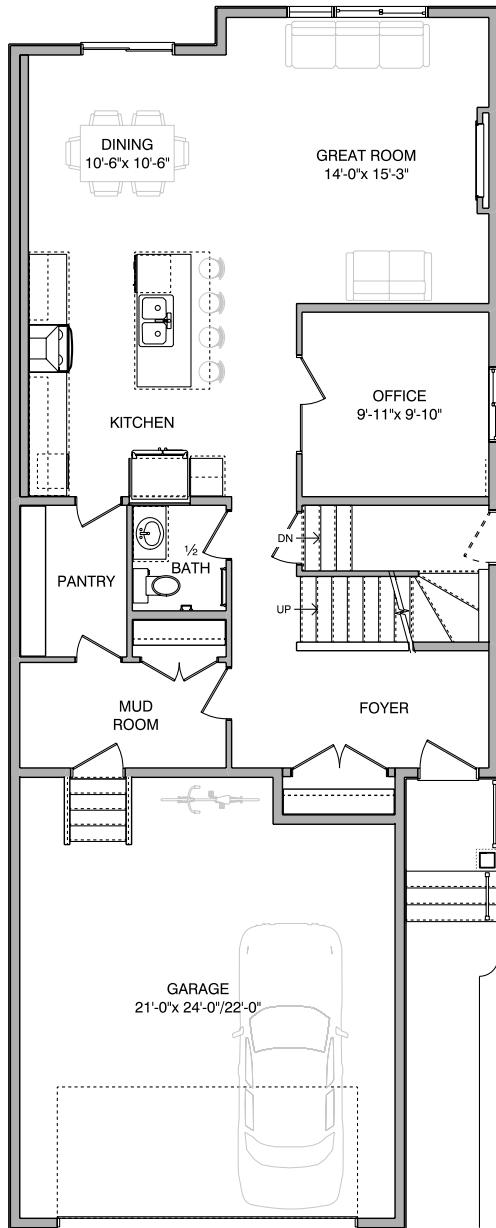
**Contact Us**  
1 (780)-554-9937  
sales@troiwestbuilders.com



# Kaveri 4

Main Floor  
1062 sq. ft.

Second Floor  
1182 sq. ft.



## Notes

---

---

---

Contact Us  
1 (780)-554-9937  
sales@troiwestbuilders.com

