

# Narmada

Featured Elevation Style:  
Prairie



## About Narmada

The three-dimensional layered window effect of the Narmada contributes to its striking exterior. A convenient design in this particular model is the main-floor passageway from the garage entrance that goes through a mudroom and walk-thru pantry to reach the kitchen containing an island. The main floor has 9 ft. ceilings as well as majestic, open-to-below upstairs visible from the great room that contains an 18 ft fireplace and adjacent dining room. The upper floor features a master bedroom with a walk-in closet, and an ensuite bathroom featuring his and her sinks, water closet, and a free-standing tub. The rest of the second floor has a large bonus room, two additional bedrooms, and a separate laundry and main bathroom.

2006 sq. ft.

3 Bed

2.5 Bath

Alternate Elevation  
Craftsman Style



### Contact Us

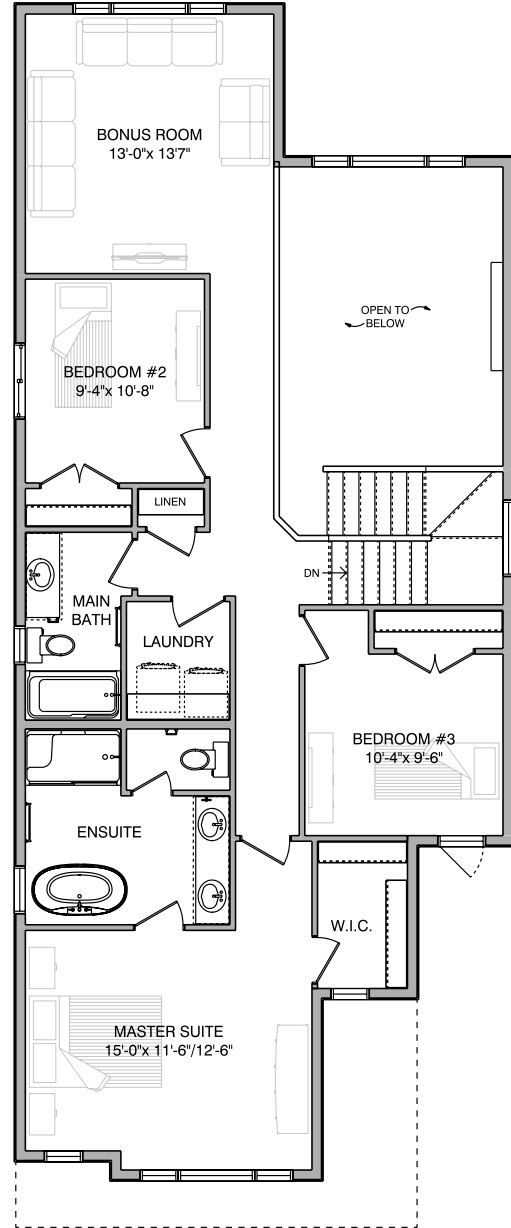
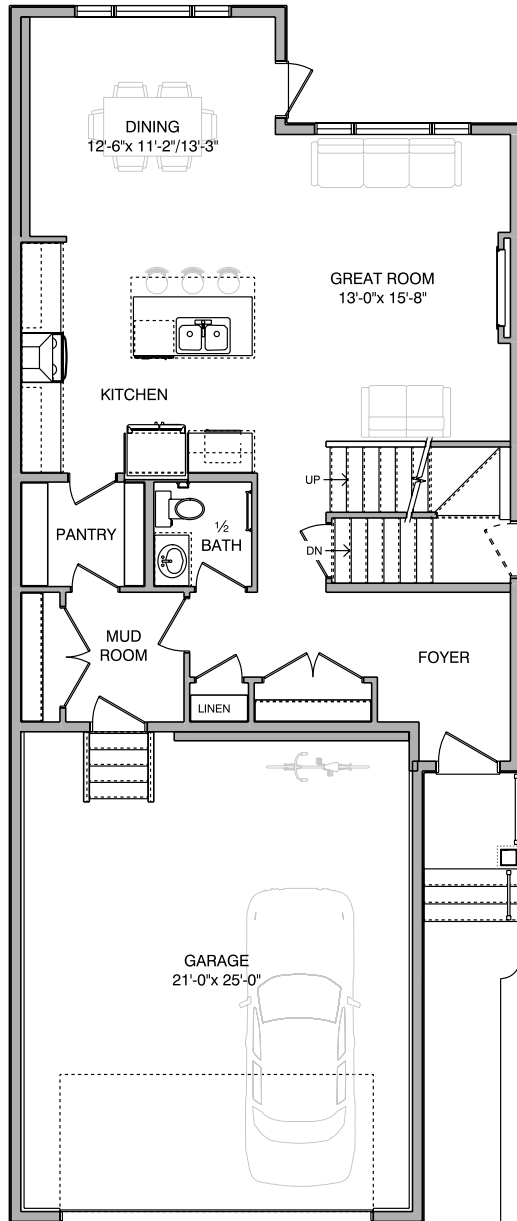
1 (780)-554-9937  
sales@troiwestbuilders.com



# Narmada

Main Floor  
901 sq. ft.

Second Floor  
1105 sq. ft.



## Notes

---

---

---

**Contact Us**  
1 (780)-554-9937  
sales@troiwestbuilders.com

