

Rhine

Featured Elevation Style:
Prairie



About Rhine

This home has a bold and distinctive exterior design that is continued throughout the interior. Walk into the Rhine and see an open concept main floor with 9 ft. ceilings, a large great room connected to a nook area that flows into the kitchen, as well as a large kitchen island that's perfect for entertaining. Completing this home is a spacious master suite with a four-piece ensuite and walk-in closet. Upstairs you'll also find an upstairs laundry station, a main bathroom, plus two additional, sizable bedrooms.

1417 sq. ft.

3 Bed

2.5 Bath

Alternate Elevation
Craftsman Style



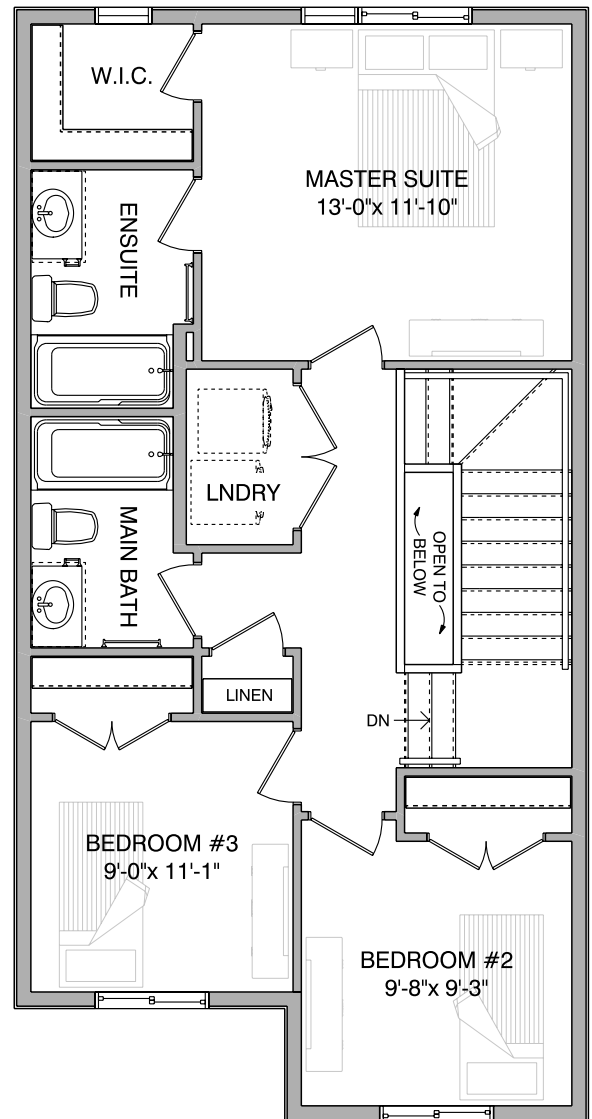
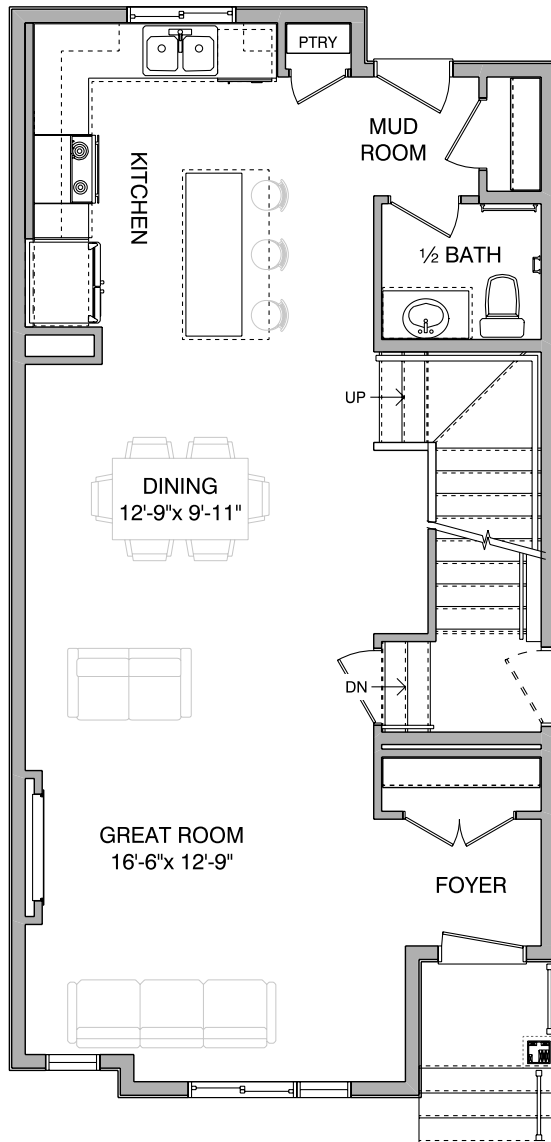
Contact Us
1 (780)-554-9937
sales@troiwestbuilders.com



Rhine

Main Floor
757 sq. ft.

Second Floor
660 sq. ft.



Notes

Contact Us
1 (780)-554-9937
sales@troiwestbuilders.com

TROIWEST
BUILDERS